

Butterflies of Zilker Botanical Garden



Gulf Fritillary
(Agraulis vanillae)



Monarch
(Danaus plexippus)



Queen
(Danaus gilippus)



Tiger Swallowtail
(Papilio glaucus)



Pipevine Swallowtail
(Battus philenor)



Black Swallowtail
(Papilio polyxenes)



Painted Lady
(Vanessa cardui)



Red Admiral
(Vanessa atalanta)



Question Mark
(Polygonia interrogationis)



Zebra Longwing
(Heliconius charitonius)



Little Sulphur
(Eurema lisa)

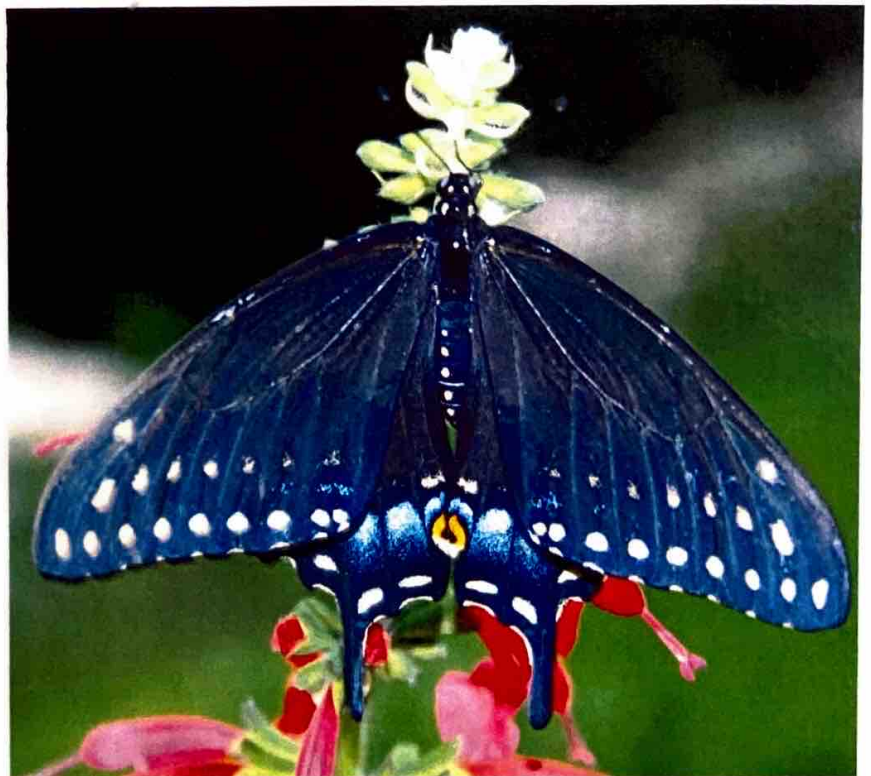
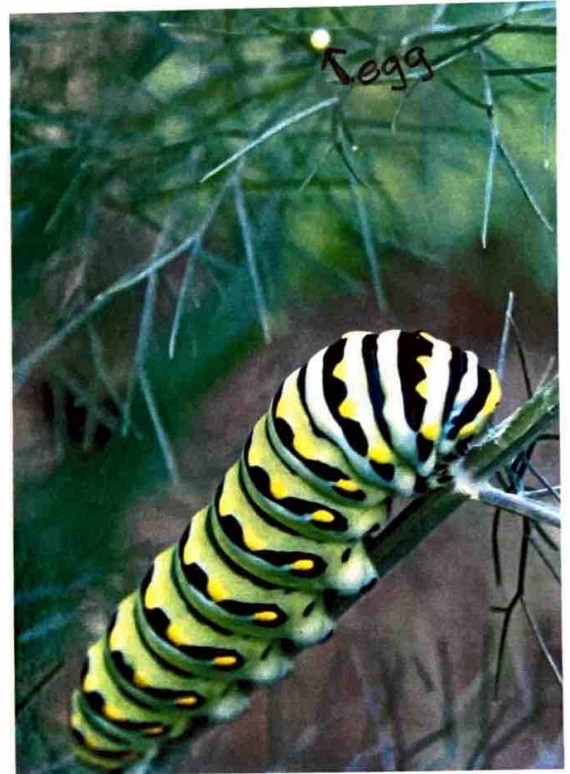


Texan Crescent
(Phyciodes texana)

Black Swallowtail Butterfly and its caterpillar stages (called instars)

The eggs are pale yellow and laid on a host plant. (in this picture, the host plant is fennel)
The egg lasts 4-9 days before becoming a caterpillar, which lasts 10-30 days.

Pupal stage (chrysalis) lasts 9-18 days before becoming a beautiful Black Swallowtail Butterfly!



Gulf Fritillary and Variegated Fritillary Butterfly

The gulf fritillary caterpillar is orange with black "hair" while the variegated fritillary is similar, but with white specks. Here is a gulf fritillary caterpillar and its pupa, or chrysalis. The host plant is passion vine.



Gulf Fritillary Butterfly

Variegated Fritillary Butterfly

