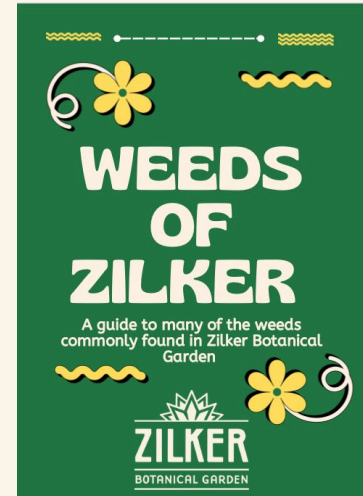


Weed Guide!

Goal:

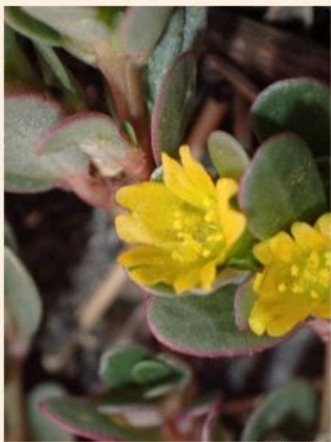
- 📍 Create a weed guide to help volunteers + staff identify some common weeds in the garden
 - Plus tips for removal, safety, etc.



PURSLANE

Portulaca oleracea

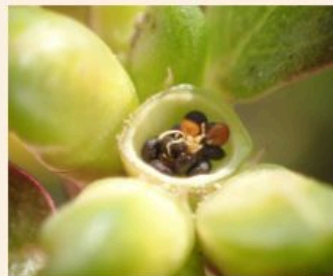
- Succulent leaves and stems
- May-August germination, grows rapidly in Spring and Summer
- Can reproduce from broken stems and roots at node
- Technically non-native to US, but likely appeared pre-settlement.



Pierre Corbion



Bernadette Lingham



Leaf0605



Vihansith Kulatunga



Forest and Kim Starr



Rakesh Chandran West Virginia University



Michigan State University



Alan Dandie



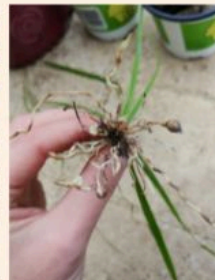
NUT SEDGE

Cyperus genus

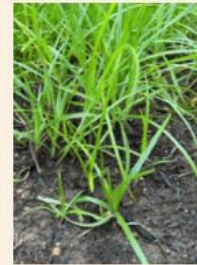
- Invasive
- Also commonly called nut grass
- *C. rotundus* and *C. esculentes* (purple and yellow nut sedge)
- Rhizomes and long root networks...broken roots can lead to even more growth
- New shoots emerge from tubers in spring and last until fall



galecannon



leotlocker



Cin-Ty Lee



Kelly Omand



Sally Adam