

Prehistoric Garden

Can you find me something that a dinosaur could eat...



or perhaps somewhere a dinosaur once placed its feet?

I heard there is a plant that coevolved alongside beetles and flies,



and you must see the dinosaur statue of actual size!



The garden contains the remnants of animals from the sea...

and that's no ordinary rock, by the way, it's a petrified tree!



Butterfly Trail

How many of these can you find?



Butterfly



Spider



Stump



Bee



Bird



Web



Squirrel



Snake



Flower



Acorn



Rock



Ant



Berries



Roly Poly



Caterpillar



Dead Tree



Snail

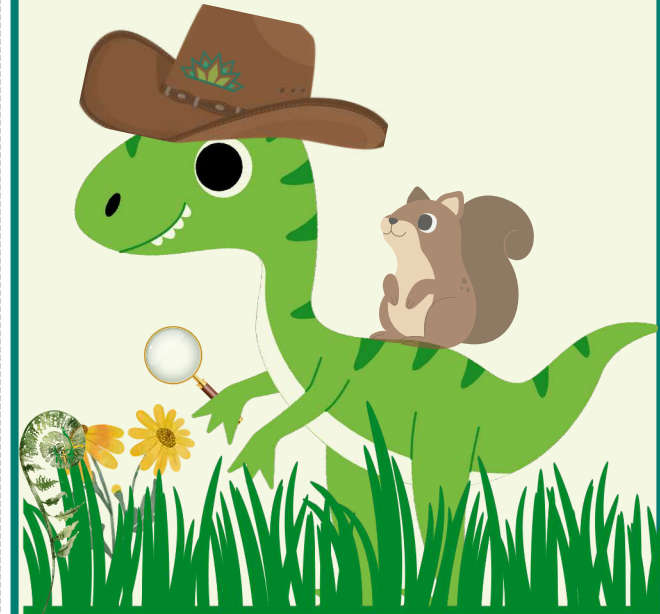


Leaf Litter

Zilker Botanical Garden's

Discovery Guide

A Self-led Activity for Adventurers of All Ages



Name:

Date:

Free Digital Guide

For more information about the Zilker Botanical Garden's botanical beauty and historical significance, scan this QR code on a mobile device to download the **Bloomberg Connects App**.

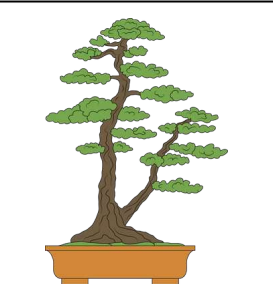


Green Garden

Draw the plants that you see:

Japanese Garden

Can you find the Koi, our pet fish?



What about the Bonsai tree that grows in a dish?

Have you walked by the ponds that spell out Austin?




or walked on the Bridge over the Moon?
Proceed with caution!

Last but not least, can you find the Garden's Motto written anywhere?



Riparian Streambed

Our **Riparian Streambed**, located between the Japanese and Herb Gardens, is home to many land and water animals. 

Draw something you observed from the streambed here:



Herb Garden

Gently touch and smell the plants along the stairs.

Write the name of your favorite herb:

• _____

What three words can you use to describe it?

• _____

• _____

• _____

Draw it here: